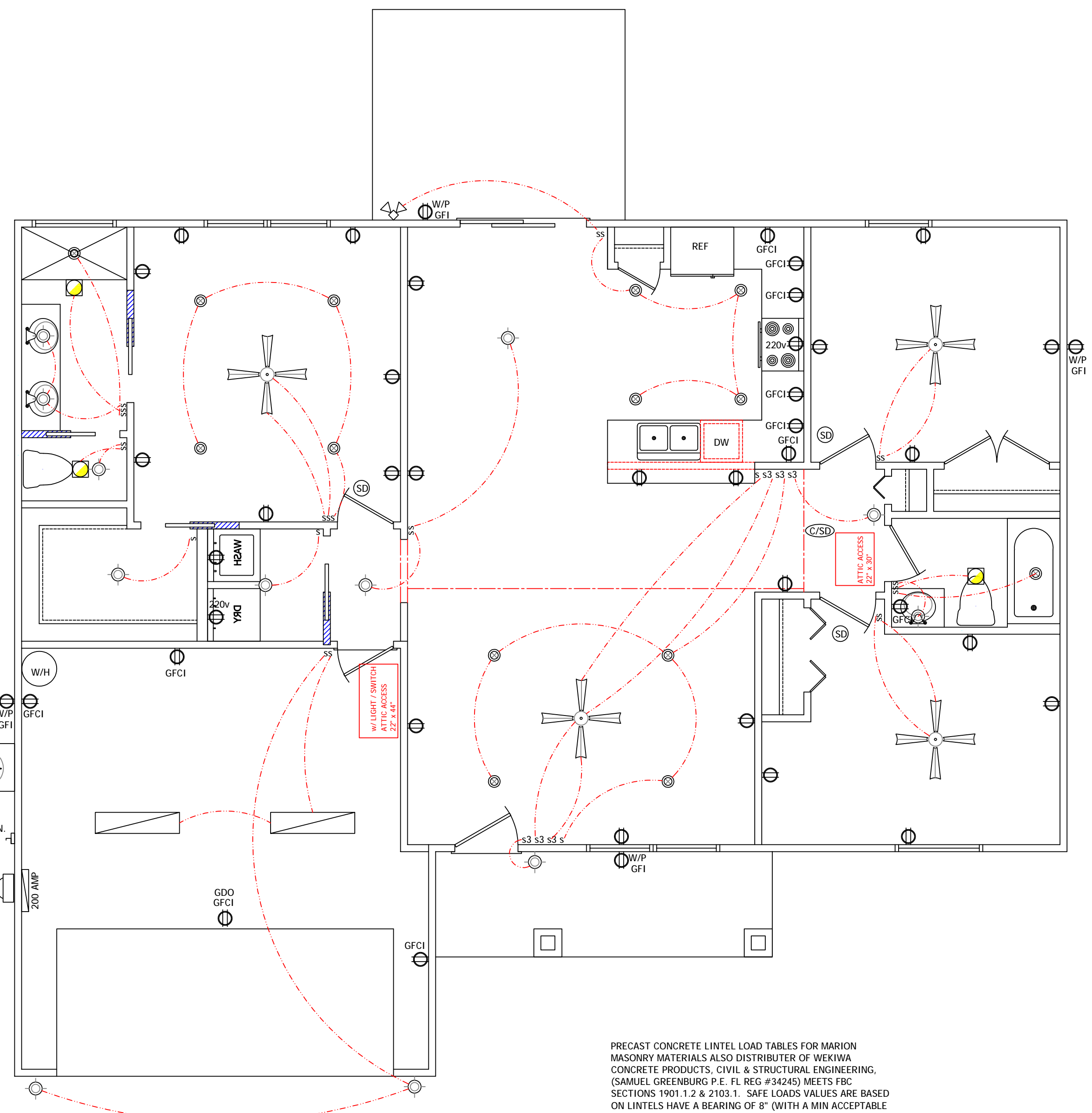


FLOOR PLAN



ELECTRICAL PLAN

ELECTRICAL LEGEND

SYMBOL	DESCRIPTION
	CEILING FAN / LIGHT
	WEATHER-PROOF GFI OUTLET
	STANDARD OUTLET
	GFCI OUTLET
	GARAGE DOOR OPENER
	220 VOLT OUTLET
	EXHAUST FAN
	RECESSED CAN LIGHT
	LIGHT FIXTURE
	FLOOD LIGHT
	PHONE JACK
	TV JACK
	POST LIGHT
	PEDULUM LIGHT
	ELECTRICAL PANEL
	SMOKE DETECTOR
	CARBON MONOXIDE / SMOKE DETECTOR
	ELECTRICAL METER
	FLUORESCENT LIGHT
	FLOOD LIGHT

CUSTOM WINDOW SYSTEMS, Inc
 3500 SERIES: ALUMINUM SINGLE HUNG WINDOWS
 CAN BE SUBSTITUTED WITH EQUAL WINDOW BY OTHER MANUFACTURER
 CMU BLOCK WALLS

26/26	74	3/4	X	72	1/4
25/25	74	3/4	X	63	
24/24	74	3/4	X	50	5/8
23/23	74	3/4	X	38	3/8
22/22	74	3/4	X	26	
26	37	3/4	X	72	1/4
25	37	3/4	X	63	
245	37	3/4	X	56	1/4
24	37	3/4	X	50	3/8
23	37	3/4	X	38	3/8
22	37	3/4	X	26	
H36	27	1/4	X	72	1/4
H35	27	1/4	X	63	
H34	27	1/4	X	50	5/8
H33	27	1/4	X	38	5/8
H32	27	1/4	X	26	

DOOR SCHEDULE

NAME	SIZE	TYPE	THRESHD
3068	3'-0" x 6'-8"	SOLID CORE	ALUMINUM
2868	2'-8" x 6'-8"	HOLLOW CORE	ALUMINUM
2668	2'-6" x 6'-8"	HOLLOW CORE	ALUMINUM
2468	2'-4" x 6'-8"	HOLLOW CORE	ALUMINUM
2068	2'-0" x 6'-8"	HOLLOW CORE	ALUMINUM
1868	1'-8" x 6'-8"	HOLLOW CORE	ALUMINUM
5068 BF	(2) 2'-6" x 6'-8"	BI-FOLD	ALUMINUM
4068 BF	(2) 2'-0" x 6'-8"	BI-FOLD	ALUMINUM
6068 SGD	(2) 3'-0" x 6'-8"	SLIDING	ALUMINUM

SQUARE FOOTAGES:
 1793 SF TOTAL
 390 SF GARAGE
 80 SF ENTRY
 1323 SF LIVING

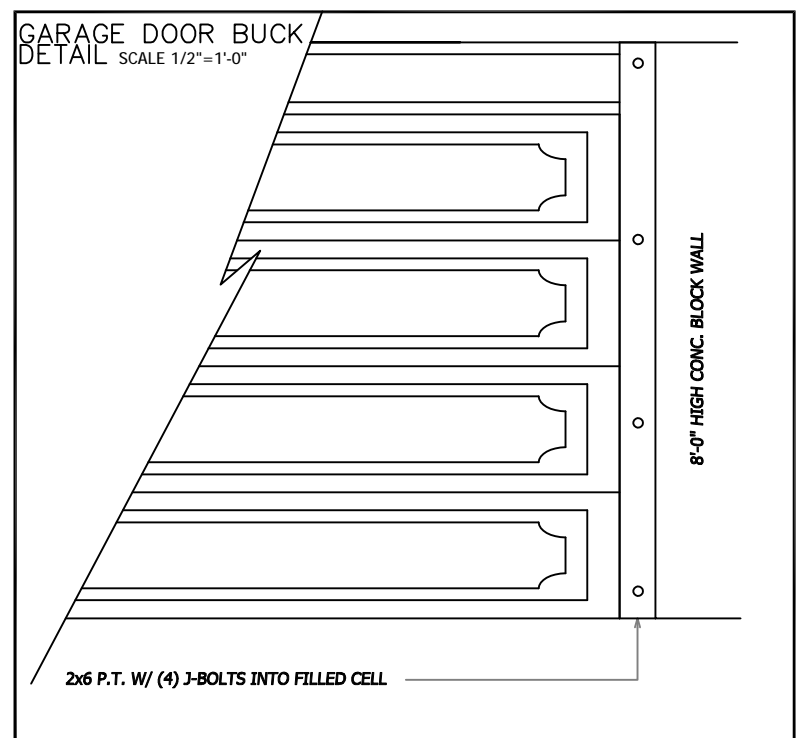
- ENGINEER'S NOTES:**
- DESIGN WIND SPEED $V_{ult} = 140$ MPH
 - BUILDING RISK CATEGORY 2
 - WIND EXPOSURE: "C"
 - FLORIDA BUILDING CODE 2017 RESIDENTIAL 6th EDITION
 - ROOF LIVE LOAD = 20 PSF, DEAD LOAD = 17 PSF
 - ASSUMED SOIL BEARING CAPACITY = 2,000 PSF
 - INTERNAL PRESSURE COEF = +/-0.18
 - NON-STRUCTURAL CHANGES DO NOT REQUIRE RE-CERTIFICATION OF PLANS

MARION MASONRY
 REINFORCING SCHEDULE AND LOAD CAPACITIES
 SAFE WORKING LOAD (plf)
 8" x 16" RECESS PRECAST LINTELS

NO.	TOTAL LINTEL LENGTH	CLEAR SPAN	LINTEL TYPE	BOTTOM REINF.	GRAVITY SAFE LOAD (1UJ & 0UJ) (1UJ & 1UJ)		UPLIFT SAFE LOAD (1UJ & 0UJ) (1UJ & 1UJ)	
					(1UJ & 0UJ)	(1UJ & 1UJ)	(1UJ & 0UJ)	(1UJ & 1UJ)
D-1	4'-0"	2'-8"	PRECAST	(2) #3	9287	10000	8519	10000
D-2	4'-4"	3'-0"	PRECAST	(2) #3	7664	8487	7030	9054
D-3	4'-8"	3'-4"	PRECAST	(2) #3	6430	6626	5897	7280
D-4	5'-8"	4'-4"	PRECAST	(2) #4	4217	3918	3752	4176
D-5	6'-8"	5'-4"	PRECAST	(2) #4	2941	2758	2587	2916
D-6	7'-8"	6'-4"	PRECAST	(2) #5	2234	2141	1884	2234
D-7	9'-4"	8'-4"	PRECAST	(2) #5	1513	1455	1116	1513

MARION MASONRY
 REINFORCING SCHEDULE AND LOAD CAPACITIES
 SAFE WORKING LOAD (plf)
 8"x16" PRECAST LINTELS

NO.	TOTAL LINTEL LENGTH	CLEAR SPAN	LINTEL TYPE	BOTTOM REINF.	TOP REINF.	GRAVITY SAFE LOAD (1UJ & 0UJ) (1UJ & 1UJ)		UPLIFT SAFE LOAD (1UJ & 0UJ) (1UJ & 1UJ)	
						(1UJ & 0UJ)	(1UJ & 1UJ)	(1UJ & 0UJ)	(1UJ & 1UJ)
L-1	2'-10"	1'-6"	PRECAST	(2) #3	(2) #3	10000	10000	10000	10000
L-2	3'-6"	2'-2"	PRECAST	(2) #3	(2) #3	10000	10000	10000	10000
L-3	4'-0"	2'-8"	PRECAST	(2) #3	(2) #3	10000	10000	10000	10000
L-4	4'-4"	3'-2"	PRECAST	(2) #3	(2) #3	8221	10000	7549	10000
L-5	4'-8"	3'-4"	PRECAST	(2) #3	(2) #3	7544	10000	6927	10000
L-6	5'-4"	4'-0"	PRECAST	(2) #3	(2) #3	5523	6496	5070	7112
L-7	5'-10"	4'-6"	PRECAST	(2) #4	(2) #3	5155	5155	4123	5478
L-8	6'-4"	5'-0"	PRECAST	(2) #4	(2) #3	4210	4210	3415	4449
L-9	6'-6"	5'-2"	PRECAST	(2) #4	(2) #3	3967	3967	3281	4186
L-10	6'-8"	5'-4"	PRECAST	(2) #4	(2) #3	3750	3750	3038	3953
L-11	7'-6"	6'-2"	PRECAST	(2) #5	(2) #3	2964	2964	2325	3084
L-12	7'-8"	6'-4"	PRECAST	(2) #5	(2) #3	2840	2840	2213	2953
L-13	8'-0"	6'-8"	PRECAST	(2) #5	(2) #3	2620	2620	2010	2722
L-14	8'-4"	7'-0"	PRECAST	(2) #5	(2) #3	2431	2431	1834	2624
L-15	9'-4"	8'-0"	PRECAST	(2) #5	(2) #3	1996	1996	1418	2068
L-16	10'-6"	9'-2"	PRECAST	(2) #5	(2) #3	1647	1647	1085	1704
L-17	11'-4"	10'-0"	PRECAST	(2) #5	(2) #3	1462	1462	911	1512
L-18	12'-0"	10'-8"	PRECAST	(2) #5	(2) #3	1341	1341	799	1385
L-19	12'-6"	11'-2"	PRECAST	(2) #5	(2) #3	1261	1261	727	1303
L-20	13'-4"	12'-0"	PRECAST	(2) #5	(2) #3	1147	1147	625	1185
L-21	14'-0"	12'-8"	PRECAST	(2) #5	(2) #3	1069	1069	557	1104
L-22	14'-8"	13'-4"	PRESTRESSED	(2) #5	(2) #3	1299	1299	456	893
L-23	15'-4"	14'-0"	PRESTRESSED	(2) #5	(2) #3	1182	1182	417	820
L-24	17'-4"	16'-0"	PRESTRESSED	(2) #5	(2) #3	910	910	324	639
L-25	19'-4"	18'-0"	PRESTRESSED	(2) #5	(2) #3	719	719	249	511
L-26	20'-0"	18'-8"	PRESTRESSED	(2) #5	(2) #3	668	668	242	477
L-27	21'-4"	20'-0"	PRESTRESSED	(2) #5	(2) #3	580	580	212	418
L-28	22'-0"	20'-8"	PRESTRESSED	(2) #5	(2) #3	542	542	199	393
L-29	24'-0"	22'-8"	PRESTRESSED	(2) #5	(2) #3	446	446	167	329



DESIGN WIND PRESSURES
 (COMPONENTS AND CLADDING)

140 MPH

0-10 SQ FT = +35.3,-38.2
 10-20 SQ FT = +33.7,-36.7
 20-50 SQ FT = +31.6,-34.6
 50-100 SQ FT = +30.0,-33.0
 100 - 500 SQ FT = +26.3,-29.3

COPYRIGHT © 2016
 THESE PLANS ARE PROTECTED BY COPYRIGHT LAWS. ANY UNAUTHORIZED USES MAY RESULT IN LEGAL ACTION.

ENGINEER'S SEAL
 PAUL D. RIDDLE, P.E.
 P.E. 36989

REVISIONS, NOTES

PROJECT DATA
 A CUSTOM DESIGN FOR
 GOOD OL BOYS, LLC.
 3924-010-134
HANNAH MODEL
 ELITE BUILDING INC.

CONTACT INFORMATION

DRAWN: JASON R. RIDDLE

DATE: 5/29/2020

SHEET DATA
 SCALE: 1/4" = 1'-0"
1 OF 3
 JOB NUMBER: 2200324